

199



FRIES SHOESTRING FZ

GOLDEN FRY SHOESTRING 6X4.5

Item # 993581

Nutrition Facts

Serving Size : 85 GR
Serving Per Container : 144

Amount Per Serving

Calories : 140	Calories from Fat : 35	
	Per Serving	% Daily Value*
Total Fat	4 g	6 %
Saturated Fat	0 g	3 %
Trans Fat	0.5 g	
Cholesterol	0 mg	0 %
Sodium	30 mg	1 %
Total Carbohydrate	23 g	8 %
Dietary Fiber	2 g	9 %
Sugars	0 g	
Protein	2 g	

Vitamin A	Per Srv	Vitamin C	Per Srv
Calcium	0%	Iron	0%

*Percent Daily Values are based on a 2000 calorie diet. Your daily values may be higher or lower depending on your calorie needs.

	Calories	2,000	2,500
Total Fat	Less than	65g	80g
Sat. Fat	Less than	20g	25g
Cholesterol	Less than	300mg	300mg
Sodium	Less than	2,400mg	2,400mg
Total Carbohydrate		300mg	375mg
Dietary Fiber		25g	30g

Calories per gram		
Fat 9	Carbohydrate 4	Protein 4

School Equivalents

Serving Size	
Meat/Meat Alternatives	
Fruit/Vegetables	
Grain/Bread	
Milk	
Child Nutrition*	

*Key: USDA=Item has USDA CN Label

BG=Item is in the USDA Buyers Guide for Nutrition Program

PFS=Manufacturer has provided a Product Formulation Statement

Product Specifications:

MFG Product	UPC	Units/Case	Unit Size/Measure	Servings/Case
GFR01	10072714180016	6		144

Brand	Class	PBH
MCCAIN	FROZEN FOOD PROCESS	POTATOES FROZEN

Gross Weight	Net Weight	Country of Origin	Kosher	Child Nutrition
28.68 LB	27 LB	US	Yes	No

Shipping Information:

Length	Width	Depth	TJ X HI	Shelf Life	Temp. Zone
16	12	11	10 * 07		-10 F 0 F

Ingredients:

Potatoes, Vegetable Oil (Contains One Or More Of The Following Oils: Canola, Soybean, Cottonseed, Sunflower, Corn), Contains 2% or less of Dextrose, Sodium Acid Pyrophosphate Added To Maintain Natural Color. **Allergy Information:** Allergens based on ingredients product could contact allergens during processing

Allergens:

Contains _____ May Contain _____

cook out

Handling Suggestions:

Best if used before 540 days from date of manufacture, when stored at 0°F-18°C or below.

Benefits:

Signature process brings out the natural potato flavor your patrons will remember. Delivers higher yield, better plate coverage, & more servings per case - all for maximum profits. Bakeable



Information concerning nutritional values and product ingredients, including major food allergens, is obtained solely from the vendor or manufacturer of the specific product, without any edits or filters by PERFORMANCELink or PFG. PERFORMANCELink and PFG do not perform any independent evaluation, review, or screening of the vendor's or manufacturer's compliance with federal, state, or local labeling requirements, or other claims. PERFORMANCELink and PFG provide this information solely as a courtesy, and make no representation concerning its accuracy. Always read the product label before use. PERFORMANCELink and PFG do not warrant or guarantee the information provided by the third party information content providers and expressly disclaim any liability arising therefrom.

200

FRIES 3/16" SWEET POTATO TRIM

Sweet Things - sweet potato fries with patented Stealth coating for naturally sweet and delicious fries. Smooth, tender interior texture with crisp, satisfying bite. Contains zero grams trans fat.

Item # 071165

Nutrition Facts

Serving Size : 3 GR

Serving Per Container :80

Amount Per Serving

Calories : 180

Calories from Fat : 70

	Per Serving	% Daily Value*
Total Fat	8 g	12 %
Saturated Fat	0 g	3 %
Trans Fat	0.5 g	
Cholesterol	0 mg	0 %
Sodium	120 mg	5 %
Total Carbohydrate	25 g	8 %
Dietary Fiber	3 g	12 %
Sugars	7 g	
Protein	2 g	

	Per Srv	Vitamin C	Per Srv
Vitamin A	0%		3.6%
Calcium	22%	Iron	0.3%

*Percent Daily Values are based on a 2000 calorie diet. Your daily values may be higher or lower depending on your calorie needs.

	Calories	2,000	2,500
Total Fat	Less than	65g	80g
Sat. Fat	Less than	20g	25g
Cholesterol	Less than	300mg	300mg
Sodium	Less than	2,400mg	2,400mg
Total Carbohydrate		300mg	375mg
Dietary Fiber		25g	30g

Calories per gram

Fat 8

Carbohydrate 4

Protein 4

Product Specifications:

MFG Product	UPC	Units/Case	Unit Size/Measure	Servings/Case
L8000	10044979128003	5	3 LB	80

Brand	Class	PBH
SWEET THINGS	FROZEN FOOD PROCESS	POTATOES FROZEN

Gross Weight	Net Weight	Country of Origin	Kosher	Child Nutrition
16.4 LB	14.99 LB	US	No	No

Shipping Information:

Length	Width	Depth	TLX/HL	Shelf Life	Temp. Zone
15	13	6	09 * 14		0 F 0 F

Ingredients:

Sweet Potatoes, Canola Oil, Modified Food Starch, Rice Flour, Cornstarch, Dextrin, Salt, Dextrose, Xanthan Gum, Leavening (Disodium Dihydrogen Pyrophosphate, Sodium Bicarbonate), Colored with Turmeric and Oleoresin Paprika. **Allergy Information :** Allergens based on ingredients product could contact allergens during processing

Allergens:

Contains

May Contain

School Equivalents

Serving Size

Meat/Meat Alternatives

Fruit/Vegetables

Grain/Bread

Milk

Child Nutrition*

*Key: USDA=Item has USDA CN Label

BG=Item is in the USDA Buyers Guide for Nutrition Program

PFS=Manufacturer has provided a Product Formulation Statement

Handling Suggestions:

Do not drop. Handle like eggs. Perishable, keep frozen. Store at 0°F or colder. Pallet height and quantity are variable, dependent on shipping method.

Benefits:

Highest quality sweet potatoes, with our patented transparent Stealth coating to deliver a smoother interior texture with a bite much crisper than any other frozen sweet potato fry. SLE: 1.6 oz = 1/4 cup veg.



Information concerning nutritional values and product ingredients, including major food allergens, is obtained solely from the vendor or manufacturer of the specific product, without any edits or filters by PERFORMANCELink or PFG. PERFORMANCELink and PFG do not perform any independent evaluation, review, or screening of the vendor's or manufacturer's compliance with federal, state, or local labeling requirements, or other claims. PERFORMANCELink and PFG provide this information solely as a courtesy, and make no representation concerning its accuracy. Always read the product label before use. PERFORMANCELink and PFG do not warrant or guarantee the information provided by the third party information content providers and expressly disclaim any liability arising therefrom.

198

FRIES 1/4 IN CURLY WSTRN SEASND

Western seasoned 1/4 twist skin-on Curley QQQ fries.

Item # 265662

Nutrition Facts

Serving Size : 3 GR
Serving Per Container : 128

Amount Per Serving

Calories : 160 Calories from Fat : 70

	Per Serving	% Daily Value*
Total Fat	8 g	12 %
Saturated Fat	0 g	10 %
Trans Fat	2 g	
Cholesterol	0 mg	0 %
Sodium	430 mg	18 %
Total Carbohydrate	24 g	8 %
Dietary Fiber	3 g	12 %
Sugars	0 g	
Protein	2 g	

	Per Srv	Vitamin C	Per Srv
Vitamin A	0%		4.8%
Calcium	0%	Iron	1.08%

*Percent Daily Values are based on a 2000 calorie diet. Your daily values may be higher or lower depending on your calorie needs.

	Calories	2,000	2,500
Total Fat	Less than	65g	80g
Sat. Fat	Less than	20g	25g
Cholesterol	Less than	300mg	300mg
Sodium	Less than	2,400mg	2,400mg
Total Carbohydrate		300mg	375mg
Dietary Fiber		25g	30g

Calories per gram
Fat 9 Carbohydrate 4 Protein 4

Product Specifications:

MFG Product	UPC	Units/Case	Unit Size/Measure	Servings/Case
C0058	10044979300584	6	4 LB	128

Brand	Class	PBH
COLOSSAL CRISP	FROZEN FOOD PROCESS	POTATOES FROZEN

Gross Weight	Net Weight	Country of Origin	Kosher	Child Nutrition
26 LB	24 LB	US	No	No

Shipping Information:

Length	Width	Depth	TLX#	Shelf Life	Temp-Zone
16	13	11	09 * 08		-10 F 15 F

Ingredients:

Potatoes, Vegetable Oil (May Contain One or More of the Following: Canola Oil, Sunflower Oil, Cottonseed Oil, Palm Oil, Corn Oil, Soybean Oil), Enriched Bleached Flour (Wheat Flour, Niacin, Iron, Thiamin Mononitrate, Riboflavin, Folic Acid), Salt, Modified Food Starch, Spices, Corn Meal, Garlic Powder, Onion Powder, Leavening (Disodium Dihydrogen Pyrophosphate, Sodium Bicarbonate), Dried Yeast, Colored with Oleoresin Paprika, Dextrose. CONTAINS: WHEAT **Allergy Information:** Allergens based on ingredients product could contact allergens during processing

Allergens:

Contains _____
WHEAT May Contain _____

School Equivalents

Serving Size _____

Meat/Meat Alternatives _____

Fruit/Vegetables _____

Grain/Bread _____

Milk _____

Child Nutrition* _____

*Key: USDA=Item has USDA CN Label
BG=Item is in the USDA Buyers Guide for Nutrition Program
PFS=Manufacturer has provided a Product Formulation Statement

Handling Suggestions:

Do not drop. Handle like eggs. Perishable, keep frozen. Store at 0°F or colder. Pallet height and quantity are variable, dependent on shipping method.

Benefits:

Coated with a special batter of spices and seasonings. Superior hold time. Great for take-out/drive thru business. Perfect for second fry concept.



Information concerning nutritional values and product ingredients, including major food allergens, is obtained solely from the vendor or manufacturer of the specific product, without any edits or filters by PERFORMANCElink or PFG. PERFORMANCElink and PFG do not perform any independent evaluation, review, or screening of the vendor's or manufacturer's compliance with federal, state, or local labeling requirements, or other claims. PERFORMANCElink and PFG provide this information solely as a courtesy, and make no representation concerning its accuracy. Always read the product label before use. PERFORMANCElink and PFG do not warrant or guarantee the information provided by the third party information content providers and expressly disclaim any liability arising therefrom.

197

FRIES 1/2" CC OVEN RDY

Field run ""1/2"" crinkle cut, ovenable.

Item # 086472

Nutrition Facts

Serving Size : 3 GR
Serving Per Container : 160

Amount Per Serving

Calories : 130 Calories from Fat : 35

	Per Serving	% Daily Value*
Total Fat	4 g	6 %
Saturated Fat	0 g	5 %
Trans Fat	1 g	
Cholesterol	0 mg	0 %
Sodium	270 mg	11 %
Total Carbohydrate	22 g	7 %
Dietary Fiber	2 g	8 %
Sugars	0 g	
Protein	2 g	

	Per Srv		Per Srv
Vitamin A	0%	Vitamin C	6%
Calcium	0%	Iron	0.6%

*Percent Daily Values are based on a 2000 calorie diet. Your daily values may be higher or lower depending on your calorie needs.

	Calories	2,000	2,500
Total Fat	Less than	65g	80g
Sat. Fat	Less than	20g	25g
Cholesterol	Less than	300mg	300mg
Sodium	Less than	2,400mg	2,400mg
Total Carbohydrate		300mg	375mg
Dietary Fiber		25g	30g

Calories per gram
Fat 9 Carbohydrate 4 Protein 4

Product Specifications:

MFG Product	UPC	Units/Case	Unit Size/Measure	Servings/Case
RR41	10044979180414	6	5 LB	160

Brand	Class	PBH
RAPID RUSSET	FROZEN FOOD PROCESS	POTATOES FROZEN

Gross Weight	Net Weight	Country of Origin	Kosher	Child Nutrition
32 LB	30 LB	US	No	No

Shipping information:

Length	Width	Depth	TI X HI	Shelf Life	Temp. Zone
16	13	11	09 * 08		0 F 0 F

Ingredients:

Potatoes, Vegetable Oil (May Contain One or More of the Following: Canola Oil, Sunflower Oil, Cottonseed Oil, Palm Oil, Corn Oil, Soybean Oil, Hydrogenated Soybean and/or Cottonseed Oil), Salt, Disodium Diphosphate (to promote color retention), Coloring (Caramel Color, Annatto Extract, Turmeric), Dextrose. **Allergy Information:** Allergens based on ingredients product could contact allergens during processing

Allergens:

Contains _____ May Contain _____

Handling Suggestions:

Do not drop. Handle like eggs. Perishable, keep frozen. Store at 0°F or colder. Pallet height and quantity are variable, dependent on shipping method.

Benefits:

Great potato flavor and heat retention. Competitively priced.

School Equivalents

Serving Size

Meat/Meat Alternatives

Fruit/Vegetables

Grain/Bread

Milk

Child Nutrition*

*Key: USDA=Item has USDA CN Label

BG=Item is in the USDA Buyers Guide for Nutrition Program

PFS=Manufacturer has provided a Product Formulation Statement



Information concerning nutritional values and product ingredients, including major food allergens, is obtained solely from the vendor or manufacturer of the specific product, without any edits or filters by PERFORMANCELink or PFG. PERFORMANCELink and PFG do not perform any independent evaluation, review, or screening of the vendor's or manufacturer's compliance with federal, state, or local labeling requirements, or other claims. PERFORMANCELink and PFG provide this information solely as a courtesy, and make no representation concerning its accuracy. Always read the product label before use. PERFORMANCELink and PFG do not warrant or guarantee the information provided by the third party information content providers and expressly disclaim any liability arising therefrom.

203

BROCCOLI FLORET IQF

Item # 067284

Nutrition Facts

Serving Size :

Serving Per Container :

Amount Per Serving

Calories : Calories from Fat : :

	Per Serving	% Daily Value*
Total Fat	g	%
Saturated Fat	g	%
Trans Fat	g	
Cholesterol	mg	%
Sodium	mg	%
Total Carbohydrate	g	%
Dietary Fiber	g	%
Sugars	g	
Protein	g	

	Per Srv	Vitamin C	Per Srv
Vitamin A	0%		0%
Calcium	0%	Iron	0%

*Percent Daily Values are based on a 2000 calorie diet. Your daily values may be higher or lower depending on your calorie needs.

	Calories	2,000	2,500
Total Fat	Less than	65g	80g
Sat. Fat	Less than	20g	25g
Cholesterol	Less than	300mg	300mg
Sodium	Less than	2,400mg	2,400mg
Total Carbohydrate		300mg	375mg
Dietary Fiber		25g	30g

Calories per gram
Fat 9 Carbohydrate 4 Protein 4

Product Specifications

MFG Product	UPC	Units/Case	Unit Size/Measure	Servings/Case
153700	60078637153705	12	2 LB	

Brand	Class	P&H
NONPAREIL	FROZEN FOOD PROCESS	VEGETABLES FROZEN

Gross Weight	Net Weight	Country of Origin	Kosher	Child Nutrition
26 LB	24 LB	N/A	Not Avail	No

Shipping Information

Length	Width	Depth	TI X HI	Shelf Life	Temp. Zone
17	10	10	10 * 06		FRZN ZNE

Ingredients

Allergy Information : Allergens based on ingredients product could contact allergens during processing

Allergens

Contains _____ May Contain _____

School Equivalents

Serving Size

Meat/Meat Alternatives _____

Fruit/Vegetables _____

Grain/Bread _____

Milk _____

Child Nutrition*

*Key: USDA=Item has USDA CN Label

BG=Item is in the USDA Buyers Guide for Nutrition Program

PFS=Manufacturer has provided a Product Formulation Statement

Handling Suggestions

Benefits



Information concerning nutritional values and product ingredients, including major food allergens, is obtained solely from the vendor or manufacturer of the specific product, without any edits or filters by PERFORMANCELink or PFG. PERFORMANCELink and PFG do not perform any independent evaluation, review, or screening of the vendor's or manufacturer's compliance with federal, state, or local labeling requirements, or other claims. PERFORMANCELink and PFG provide this information solely as a courtesy, and make no representation concerning its accuracy. Always read the product label before use. PERFORMANCELink and PFG do not warrant or guarantee the information provided by the third party information content providers and expressly disclaim any liability arising therefrom.

203

IDAHO FREEZ-PAK CORP. - PRODUCT INFORMATION

Product: IQF Broccoli Florets
Pack: 12/2# bags
20#

Brand: NONPAREIL®
Item #: 153700
Item #: 153750

Product Description: Frozen broccoli florets is the product from the fresh, clean, sound shoots of the broccoli plant by trimming, washing, cleaning, blanching, sorting and properly draining and must meet USDA Grade A and comply with the U.S. Standards for Grades of Frozen Broccoli.

Ingredients: Broccoli

Shelf life: 24 months

Recommended Storage: Store at 0°F or below

UPC: 60078637153705

T1/H1/10/16

GRSW9 Ht 2 26

cube: 1.8

COO: China

Nutrition Facts			
Serving Size		(82g)	
Serving per container		about	varies
Amount per Serving			
Calories	25	Calories from fat	0
% Daily Value			
Total fat	0g		0%
Saturated fat	0g		0%
Cholesterol	0mg		0%
Sodium	20mg		1%
Total Carbohydrate	4g		1%
Dietary Fiber	2g		9%
Sugars	1g		
Protein		2g	
Vitamin A	10%		Vitamin C 50%
Calcium	2%		Iron 2%
*Percent Daily Values are based on a 2,000 calorie diet. Your daily values may be higher or lower depending on your calorie needs.			
	Calories	2,000	2,500
Total Fat		< 65g	< 80g
Sat. Fat		< 20g	< 25g
Cholesterol		< 300mg	< 300mg
Sodium		< 2400mg	< 2400mg
Total Carbohydrates		300g	375g
Dietary Fiber		25g	30g
Calories per gram:			
Fat	9	Carbohydrates	4 Protein 4

CAULIFLOWER IQF

204

CHILL RIPE CAULIFLOWER FLORETS

Item # 294963

Nutrition Facts

Serving Size : 85 GR
Serving Per Container : 12

Amount Per Serving

Calories : 15 Calories from Fat : 0

	Per Serving	%Daily Value*
Total Fat	0	0%
Saturated Fat	0	0%
Trans Fat	0 g	
Cholesterol	0 mg	0%
Sodium	15 mg	1%
Total Carbohydrate	3 g	1%
Dietary Fiber	2 g	8%
Sugars	1 g	%
Protein	1 g	
	Per Srv	Per Srv
Vitamin A	0 %	Vitamin C 20 %
Calcium	0 %	Iron 0 %

*Percent Daily Values are based on a 2000 calorie diet. Your daily values may be higher or lower depending on your calorie needs.

	Calories	2,000	2,500
Total Fat	Less Than	65g	80g
Sat. Fat	Less Than	20g	25g
Cholesterol	Less Than	300g	300g
Sodium	Less Than	2400mg	2400mg
Total Carbohydrate		300mg	375mg
Dietary Fiber		25g	30g
Calories per gram			
Fat	9	Carbohydrate	4
		Protein	4

School Equivalents

Serving Size _____
Meat/Meat Alternatives _____
Fruit/Vegetables _____
Grain/Bread _____
Milk _____
Child Nutrition* _____

*Key: USDA=Item has USDA CN label

BG=Item is in the USDA Buyers Guide for Child Nutrition Program

PFS=Manufacturer has provided a Product Formulation Statement

Product Specifications:

MFG Product	UPC	Units/Case	UnitSize/Measure	Serving/Case
49263	10034700492633	12.0	2LB	12

Brand	Class	PBH
CHILL-RIPE	FROZEN FOOD PROCESS	VEGETABLES FROZEN

Gross Wt	Net Wt	Origin	Kosher	Child Nutrition
25.68	24.0		Y	

Shipping Information:

LenXWidthXHt	TIHl	ShelfLife	TempZone	Wt Flag
15.4X11.6X11.7	1006	720	FROZEN	N

Allergens:

Contains _____ May contain _____

Handling Suggestions:

KEEP FROZEN AT 0 DEGREES F OR BELOW.

Benefits:

BONDUELLE IS THE WORLD'S UNDISPUTED LEADER IN PROCESSED VEGETABLES

Additional Information:

Ingredients:

CALIFLOWER



Information concerning nutritional values and product ingredients, including major food allergens, is obtained solely from the vendor or manufacturer of the specific product, without any edits or filters by PERFORMANCEnet or PFG. In most cases, the vendor or manufacturer submits nutritional values to PFG as rounded values and not actual values; therefore, laboratory test results for nutritional content of multi-ingredient menu items may be different from the calculated values using the data provided. PFG does not perform any independent evaluation, review, or screening of the vendor's or manufacturer's compliance with federal, state, or local labeling requirements, or other claims. PERFORMANCEnet and PFG provide this information solely as a courtesy, and make no representation concerning its accuracy. Always read the product label before use. PERFORMANCEnet and PFG do not warrant or guarantee the information provided by the third party information content providers and expressly disclaim any liability arising therefrom.

202



BEAN GRN REG CUT

GRADE A 3-4 SEVE CUT GREEN BEAN CUT APPROXIMATELY 1" IN LENGTH



Item # 993321

Nutrition Facts

Serving Size : 81 GR
Serving Per Container : 112

Amount Per Serving

Calories : 30 Calories from Fat : 0

	Per Serving	% Daily Value*
Total Fat	0 g	0 %
Saturated Fat	0 g	0 %
Trans Fat	0 g	0 %
Cholesterol	0 mg	0 %
Sodium	0 mg	0 %
Total Carbohydrate	5 g	2 %
Dietary Fiber	2 g	8 %
Sugars	4 g	
Protein	1 g	

	Per Srv		Per Srv
Vitamin A	0%	Vitamin C	0%
Calcium	0%	Iron	0%

*Percent Daily Values are based on a 2000 calorie diet. Your daily values may be higher or lower depending on your calorie needs.

	Calories	2,000	2,500
Total Fat	Less than	65g	80g
Sat. Fat	Less than	20g	25g
Cholesterol	Less than	300mg	300mg
Sodium	Less than	2,400mg	2,400mg
Total Carbohydrate		300mg	375mg
Dietary Fiber		25g	30g

Calories per gram
Fat 9 Carbohydrate 4 Protein 4

Product Specifications:

MFG Product	UPC	Units/Case	Unit Size/Measure	Servings/Case
993321	806795017502	1	20 LB	112

Brand	Class	P6H
SILVER SOURCE	FROZEN FOOD PROCESS	VEGETABLES FROZEN

Gross Weight	Net Weight	Country of Origin	Kosher	Child Nutrition
21 LB	20 LB	US	No	No

Shipping Information:

Length	Width	Depth	TLX HI	Shelf Life	Temp. Zone
16	12	8	13 * 08		-10 F 32 F

Ingredients:

Green Beans **Allergy Information :** Allergens based on ingredients product could contact allergens during processing

Allergens:

Contains _____ May Contain _____

School Equivalents

Serving Size

Meat/Meat Alternatives

Fruit/Vegetables

Grain/Bread

Milk

Child Nutrition*

*Key: USDA=Item has USDA CN Label

BG=Item is in the USDA Buyers Guide for Nutrition Program

PFS=Manufacturer has provided a Product Formulation Statement

Handling Suggestions:

storage 0 degrees or below- cooking instructions 165 degrees F

Benefits:

Economical, healthy product that will taste just as good as fresh vegetables, but with a 2 year shelf life.



Information concerning nutritional values and product ingredients, including major food allergens, is obtained solely from the vendor or manufacturer of the specific product, without any edits or filters by PERFORMANCELink or PFG. PERFORMANCELink and PFG do not perform any independent evaluation, review, or screening of the vendor's or manufacturer's compliance with federal, state, or local labeling requirements, or other claims. PERFORMANCELink and PFG provide this information solely as a courtesy, and make no representation concerning its accuracy. Always read the product label before use. PERFORMANCELink and PFG do not warrant or guarantee the information provided by the third party information content providers and expressly disclaim any liability arising therefrom.



**CHILL-RIPE
CUT GREEN BEANS
ITEM# 1003800200450912
SIZE: 12/2LBS**

DESCRIPTION OF PRODUCT

Regular blanch, dark variety, cut green beans should be young and tender, and have a uniform green color. Pods should be full fleshed with seed cavity tight around seeds. The beans should be washed, cut, blanched, and frozen in accordance with recognized Good Manufacturing Practices and all Federal, state and local regulations. Is not considered to be a ready to eat food.

GRADE Product will meet USDA guidelines for Grade A.

SCORING FACTORS DEFINITION

Sample Size: 60 ounces unless otherwise specified.

INGREDIENTS: Cut Green Beans (100%) Product of USA Item# 1103800

COLOR

Beans must have a uniform, distinct dark green color, typical of dark variety beans, and have similar varietal characteristics. Beans must be evaluated for color immediately upon thawing.

WORKMANSHIP

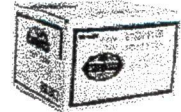
Category	Range	Limits
Size: Sieve	2 – 3 – 4 sieve	Target
	5 sieve	Maximum: 5% by count
Length	6 sieve	Maximum: None
	1"	Target
	> 1 3/8"	Maximum: 8 units / 10 oz
	< 1/2"	Maximum: 10 units / 10 oz
Defects:		
<u>Extraneous Vegetable Material:</u>		Maximum: 2 units / 60 oz
<u>Stems:</u> Ends and unattached stems, a unit with the attached stem or portion thereof that attaches the pod to the vine stem. The stem or portion of stem that attaches the bean pod to the vine stem and has become separated from the pod.		Maximum: 4 units / 60 oz
<u>Major blemishes:</u> Obvious objectionable damage such as pathological injury, insect injury, hard collars (unit without an attached stem, but with a stem collar that is hard or tough), tough strings (strings or pieces of strings removed from the cooked bean pod), discoloration, or blemishes exceeding an aggregate area of more than 1/4" in diameter.		Maximum: 7 units / 60 oz
<u>Minor Blemish (Includes Slab Cuts):</u> Noticeable discoloration, blemishes, rust spots, brown, oxidized ends, etc. covering an aggregate area of 1/8" – 1/4" in diameter. Damage less than 1/8" is considered insignificant unless it obviously detracts from the appearance.		Scored in total blemishes
<u>Total Blems:</u> Total of major and minor blemishes.		Maximum: 25 units / 60 oz
<u>Mechanical Damage:</u> Any unit that is split in two parts, has very ragged edges, is crushed, or is damaged by mechanical means to such an extent that the appearance is		Maximum: 7 units / 10 oz

204

CORN CUT WHL KERNEL IQF

GRADE A CUT CORN, IQF IN BULK PACK. GOLDEN COLOR

WEST CREEK



Item # 993261

Nutrition Facts

Serving Size : 90 GR
Serving Per Container : 101

Amount Per Serving

Calories : 100 Calories from Fat : 10

	Per Serving	% Daily Value*
Total Fat	1 g	1 %
Saturated Fat	0 g	0 %
Trans Fat	0 g	
Cholesterol	0 mg	0 %
Sodium	0 mg	0 %
Total Carbohydrate	21 g	7 %
Dietary Fiber	1 g	4 %
Sugars	5 g	
Protein	3 g	

	Per Srv		Per Srv
Vitamin A	0%	Vitamin C	0%
Calcium	0%	Iron	0%

*Percent Daily Values are based on a 2000 calorie diet. Your daily values may be higher or lower depending on your calorie needs.

	Calories	2,000	2,500
Total Fat	Less than	65g	80g
Sat. Fat	Less than	20g	25g
Cholesterol	Less than	300mg	300mg
Sodium	Less than	2,400mg	2,400mg
Total Carbohydrate		300mg	375mg
Dietary Fiber		25g	30g

Calories per gram
Fat 9 Carbohydrate 4 Protein 4

Product Specifications:

MFG Product	UPC	Units/Case	Unit Size/Measure	Servings/Case
993261	806795017632	1	20 LB	101

Brand	Class	PBH
WEST CREEK	FROZEN FOOD PROCESS	VEGETABLES FROZEN

Gross Weight	Net Weight	Country of Origin	Kosher	Child Nutrition
21 LB	20 LB	US	No	No

Shipping Information:

Length	Width	Depth	TI X HI	Shelf Life	Temp. Zone
14	10	8	14 * 07		-10 F 32 F

Ingredients:

Corn **Allergy Information** : Allergens based on ingredients product could contact allergens during processing

Allergens:

Contains _____ May Contain _____

School Equivalents

Serving Size _____
 Meat/Meat Alternatives _____
 Fruit/Vegetables _____
 Grain/Bread _____
 Milk _____
 Child Nutrition* _____

*Key: USDA=Item has USDA CN Label

BG=Item is in the USDA Buyers Guide for Nutrition Program

PFS=Manufacturer has provided a Product Formulation Statement

Handling Suggestions:

storage 0 degrees or below- cooking instructions 165 degrees F

Benefits:

Economical, healthy product that will taste just as good as fresh vegetables, but with a 2 year shelf life.



Information concerning nutritional values and product ingredients, including major food allergens, is obtained solely from the vendor or manufacturer of the specific product, without any edits or filters by PERFORMANCELink or PFG. PERFORMANCELink and PFG do not perform any independent evaluation, review, or screening of the vendor's or manufacturer's compliance with federal, state, or local labeling requirements, or other claims. PERFORMANCELink and PFG provide this information solely as a courtesy, and make no representation concerning its accuracy. Always read the product label before use. PERFORMANCELink and PFG do not warrant or guarantee the information provided by the third party information content providers and expressly disclaim any liability arising therefrom.

FROZEN GREEN PEAS
89 GRAM SERVING

Nutrition Facts			
Serving Size 2/3 cup (89g)			
Servings per container about 13			
Amount per serving			
Calories 70	Calories from Fat 0		
% Daily Values *			
Total Fat 0g	0%		
Saturated Fat 0g	0%		
<i>Trans</i> Fat 0g			
Cholesterol 0mg	0%		
Sodium 0mg	0%		
Total Carbohydrate 12g	4%		
Dietary Fiber 4g	16%		
Sugars 4g			
Protein 5g			
Vitamin A 8%	Vitamin C 10%		
Calcium 0%	Iron 6%		
*Percent Daily Values are based on a 2,000 calorie diet. Your daily values may be higher or lower depending on your calorie needs:			
	Calories	2,000	2,500
Total Fat	Less than	65 g	80 g
Sat Fat	Less than	20 g	25 g
Cholesterol	Less than	300 mg	300 mg
Sodium	Less than	2,400 mg	2,400 mg
Total Carbohydrate		300 g	375 g
Dietary Fiber		25 g	30 g

INGREDIENTS: PEAS.

HEALTH CLAIMS
"GOOD SOURCE OF FIBER & VITAMIN C"

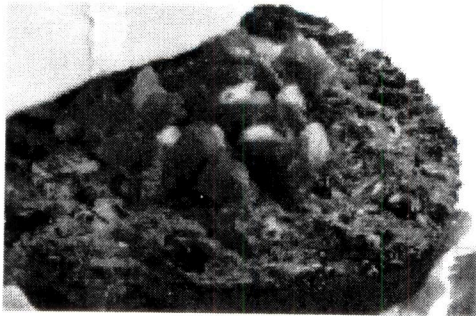
This nutrient information is applicable only to vegetables from companies which are members of the American Frozen Food Institute's (AFFI) nutrient database.

The serving size data is based on information provided by AFFI members.

9061

Dr. Praeger's

sensible foods



Black Bean Burgers

INGREDIENTS:

Non GMO Textured Soy Protein (Soy Flour, Caramel Color, Water for Hydration), Cooked Black Beans (Black Beans, Water), Cooked Brown Rice (Brown Rice, Water), Onions, Expeller Pressed Canola Oil, Corn, Wheat Gluten, Red Peppers, Arrowroot, Egg Whites, Cilantro, Chili Powder, Jalapeno Peppers, Vegetarian Meat Flavor (Yeast Extract, Maltodextrin, Salt, Natural Flavorings), Garlic, Salt, Black Pepper.

ORDERING CODE: **SVB-SWIN33** UPC CODE: 80868-06617

Nutrition Facts	
Serving Size 1 Burger (94g)	
Servings Per Container About 48	
Amount Per Serving	
Calories 160	Calories from fat 30
% Daily Value*	
Total Fat 3g	5%
Saturated Fat 0g	2%
Trans Fat 0g	
Cholesterol 0mg	0%
Sodium 350mg	15%
Total Carbohydrate 14g	5%
Dietary Fiber 3g	13%
Sugars 3g	
Protein 16g	
Vitamin A 1%	Vitamin C 0%
Calcium 6%	Iron 11%

*Percent Daily Values are based on a diet of other people's secrets. Your daily values may be higher or lower depending on your calorie needs.

Nutrition Facts



Where you recognize all the ingredients!

www.drpraegers.com

Made in the USA



Dr. Praeger's
sensible foods

207
208



California Veggie Burgers

INGREDIENTS:

Carrots, Onions, String Beans, Oat Bran, Soybeans, Zucchini, Peas, Broccoli, Corn, Soy Flakes, Spinach, Expeller Pressed Canola Oil, Red Peppers, Arrowroot, Corn Starch, Garlic, Corn Meal, Salt Parsley, Black Pepper.

Nutrition Facts

Serving Size 1 Burger 4 oz (113g)
Pieces Per Case 40

Amount Per Serving

Calories 170 Calories from fat 60

% Daily Value*

Total Fat 6g 10%

 Saturated Fat 0.5g 3%

 Trans Fat 0g

Cholesterol 0mg 0%

Sodium 370mg 16%

Total Carbohydrate 20g 7%

 Dietary Fiber 6g 25%

 Sugars 3g

Protein 7g

Vitamin A 80% • **Vitamin C** 6%

Calcium 8% • **Iron** 15%

*Percent Daily Values are based on a 2000 calorie diet. Your daily values may be higher or lower depending on your calorie needs.

ORDERING CODE:

VBIN4

UPC CODE: 80868-00010



Where you recognize all the ingredients!

www.drpraegers.com

Made in the USA

